

# How to map the Tangible Resources of Cultural Ecosystem Services in ASEAN Countries?



**NIFoS**

Yujin SHIN, Chan Ryul PARK,  
Junghyun HONG, Kyongha KIM

# CONTENTS

---

1. Introduction

2. Study Area

3. Method

4. Results

5. Discussion

6. Future Research



# 1. Introduction

---

- Cultural Ecosystem Services (MA, 2003)
  - Cultural necessary and beneficial services for human well-being from ecosystem
  - Tangible/ Intangible resources

- Monuments
- Status
- Traditional palaces (buildings)
- Beautiful places
- Unique spaces
- Curious rocks
- Village Shrines
- Temples

Tangible Intangible

- Symbolic meanings
- Spiritual Thought
- Aesthetic value



# 1. Introduction

---

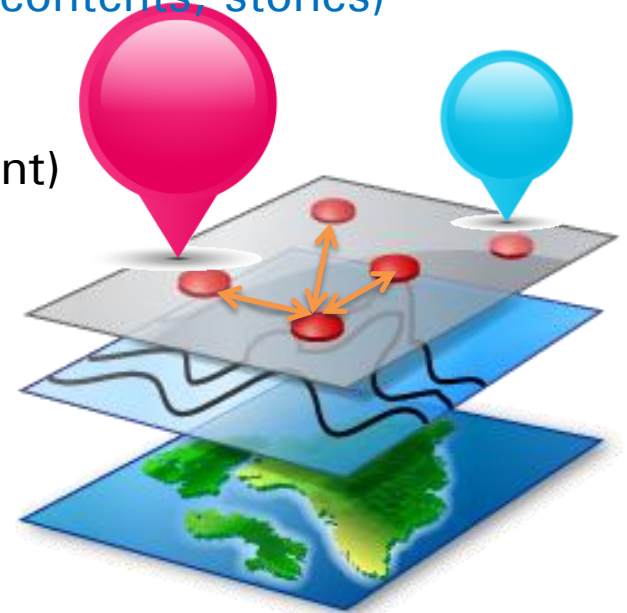
- ASEAN countries do possess diverse cultural services, still have been survived and pass down TFK in their livelihood, cultural activities and their own ceremonies(TEEB, 2010).
- In this context, cultural service resources reflect history and their identities, local distinctiveness.
- Therefore, It is very crucial to identify what kind of cultural resources we have. to figure out their locations and spatial distribution.



# 1. Introduction

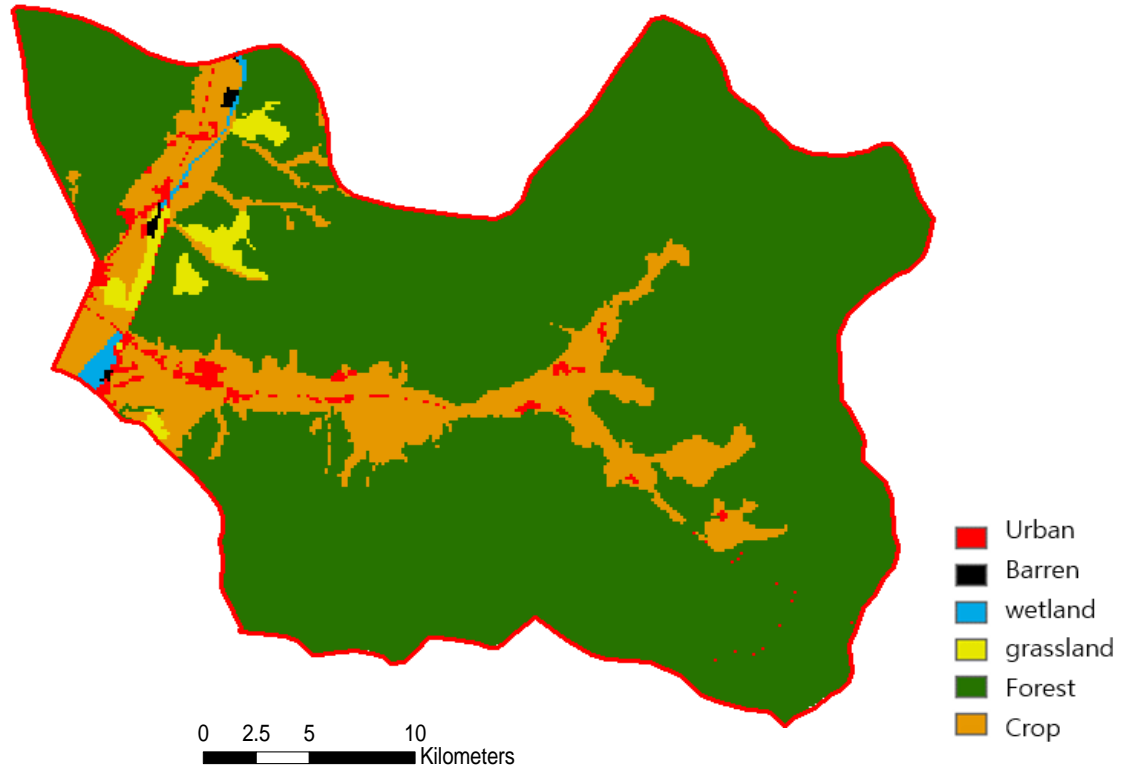
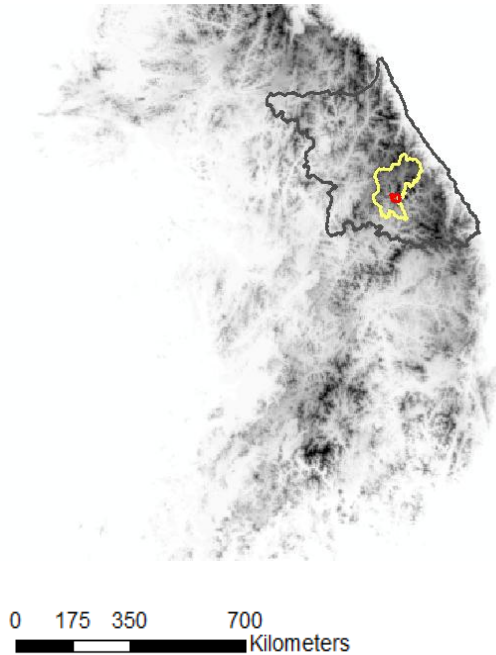
---

- **Spatial Distribution** of Cultural Service Resources
  1. Fundamental Step (location, basic information) “What is this?”
  2. Impact Extent (cultural influence space) “How much important/ valuable?”
  3. Relationship with Intangible Components (symbolic meaning)  
“Why, What from do they think in that way?”
  4. Connection between resources (potential cultural contents, stories)
  5. For better **Cultural Heritage Management**  
(political decision-making, space priority investment)



## 2. Case Study Area

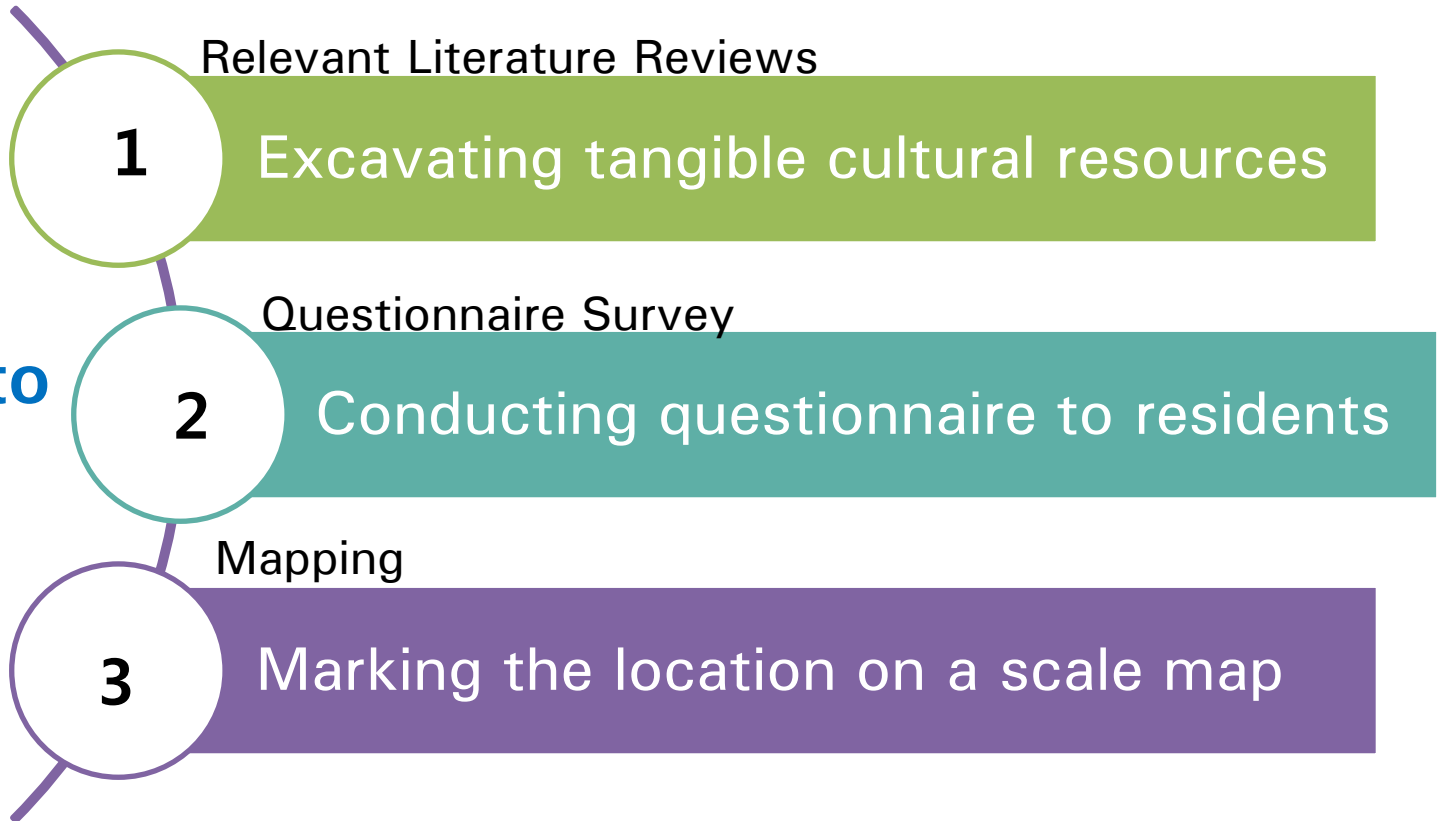
- Haanmi-ri (village), Pyeongchang, Gangwon-province
- 40km<sup>2</sup>(4,000ha)
- 1,407 residents are living
- Dominant type of land use is forest and cultivation field



# 3. Method

---

## 3 Steps to Map



# 3. Method

---

## 1. Relevant Literature Reviews

- First step to excavate tangible cultural resources
- Culture research center of the region (Pyeongchang Center)
- Regional culture brochure (legendry, historical documents...)
- Books, published papers (related to regional research)
- Contents already surveyed before, just clipping
- Yedam-pyeong
- St. Sacho
- Daeduk Rock



# 3. Method

---

## 2. Questionnaire Survey (\*appendix 1)

- 6 residents
- Over 30 years of residence period (minimum 20 years)
- September of 2015
- + person to person interview
  
- Forest Usage
- About cultural tangible resources....
  - **experiences** (personal story, double-check resources searched at 1 step)
  - **recognition, perception** (conservation ↔ active use)
  - **location** (showing the map)



# 3. Method

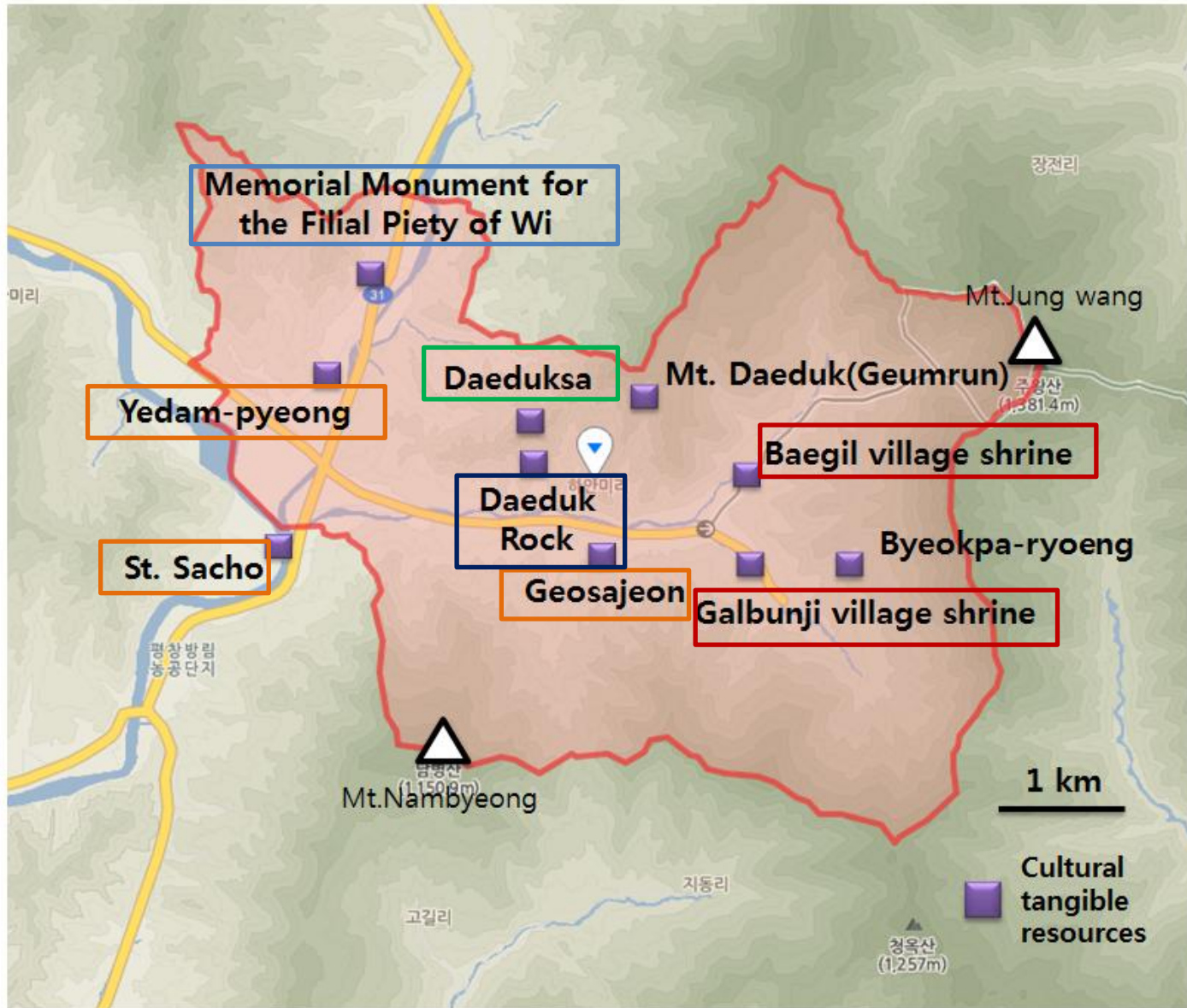
---

## 3. Mapping

- Visiting and checking GPS location
- Marking the location on the map scale of 100,000



# 4. Results



- Monument
- Historical site
- Temple
- Village shrine
- Curious Rock

## 4. Results

---

- Baegil village shrine



## 4. Results

- Baegil village shrine



## 4. Results

- Baegil village shrine (aerial photograph)



## 5. Discussion

---

- Mapping tangible cultural resources is **fundamental step**.
- Next, it can be useful information for sophisticated spatial analysis like using GIS.
- In addition, it helps us to utilize potential cultural resources as regional contents like **eco-tourism (cultural trek course)**.



# 6. Future Research

---

- **OUTPUTs from the future research**

(1)The List of Cultural Tangible Resources

(2)The map of Cultural Tangible Resources

< **Study Area Setting** >

1) Natural environment information

- Spatial scale (landscape/ village...)
- Temperature
- Precipitation
- Altitude (elevation)
- Main Forest

2) Social-economic environment information

- Survey group scale (personal/ IP, small group/ community...)
- Population
- Main Age group
- Main Income

# 6. Future Research

- 3 steps to map tangible resources of cultural ecosystem services

1. Relevant literature reviews	<ul style="list-style-type: none"><li>• culture research center of the region</li><li>- regional culture brochure</li><li>- books, published papers(regional research)</li></ul>
2. Questionnaire survey	<ul style="list-style-type: none"><li>• over 30 years of residence period (minimum 20 years)</li><li>• Forest usage</li><li>• About cultural tangible resources...<ul style="list-style-type: none"><li>- direct/ indirect experiences (heard from others)</li><li>- recognition, perception</li><li>- location (with map)</li><li>- possession</li></ul></li></ul> <p>(individual &lt; community(IP) &lt; village &lt; region)</p>
3. Mapping	<ul style="list-style-type: none"><li>• checking the location with GPS</li><li>• marking the location on a 100,000 scale map (depending on the area)</li><li>• cross-match with aerial photograph</li><li>• analyzing the distribution &amp; pattern of resources</li></ul>

# 6. Future Research

- The List of Tangible Cultural Resources (\* appendix 2)

Resources	Type	Contents	Perception					Location (GPS)	Possession	Religion
		Stories	Conservation ↔ Active use							
<b>1. Yedam-pyeong</b>	Historical place	When during the Japanese invasion, and piled up the number of high stone walls waegun killed it was known as "Gotham flat. Who wrote that the former 'High (古)' 'old dampyeong', flat and currently yedam has left a trail of stone walls. It is currently in use by improving rice fields.	1	2	3	4	5	128.43°E/ 37.45°N	community	×
<b>2. Filial Piety of Wi</b>	Monument		1	2	3	4	5			
<b>3. St. Sacho</b>	Historical place		1	2	3	4	5			
<b>4. Daeduksa</b>	Temple		1	2	3	4	5			

## 6. Future Research

---

- Time Schedule

March	April	May	Jun
			<ul style="list-style-type: none"><li>• Check I</li><li>• Sharing Results</li><li>• Feedback</li></ul>

July	August	September	October
	<ul style="list-style-type: none"><li>• Check II</li><li>• Confirming</li></ul>		<ul style="list-style-type: none"><li>• Submit Report</li></ul>

Thank you very much !

